

Instructions for the Floral Tote

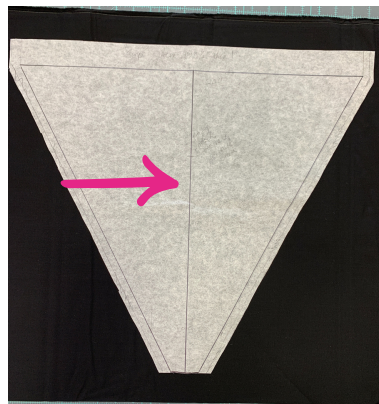
This is a great scrap-busting project! You can use any fabric made from natural materials. Linens, Quilting Cottons, and Denims work best. You will need a piece of fabric approx. 20"x22"

Making the Pattern:

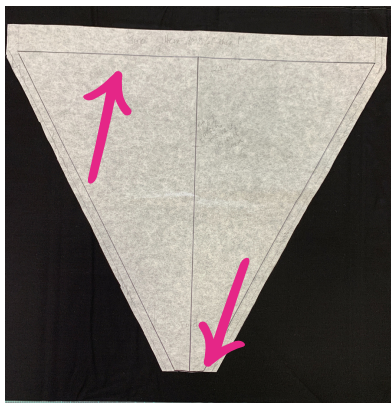
Use Pattern Ease, or some other pattern paper to make your pattern.

You're going to draw a letter 'I' with the top cross line longer than the bottom cross line.

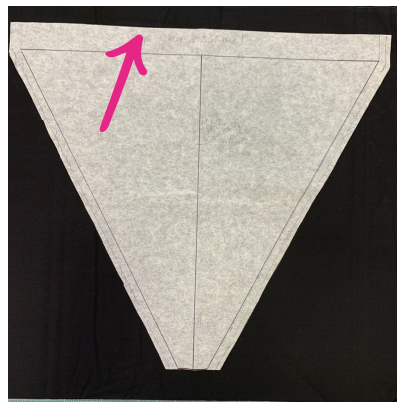
-First draw your center vertical line 17 1/2"

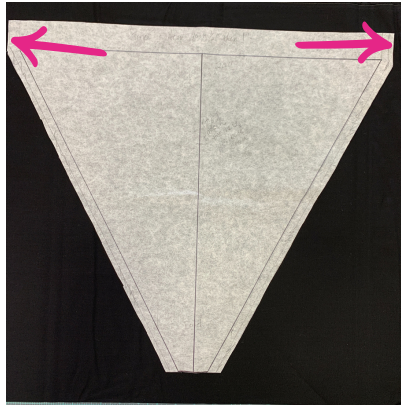


-Then draw your two horizontal lines. They will be intersected in the center by the vertical line. The top line is 21 1/2" and the bottom line is 3"

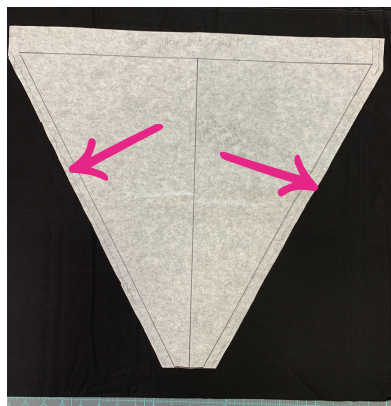


Finally, draw another 21 1/2" line, parallel to the top line, 1 1/2 inches above the top line, and close in the ends of that newly formed rectangle. This is the hem at the top of the floral tote.





Now, close in the sides of the 'I' from the lower 21 1/2" line, to the 3" line on both sides, forming a triangle with a 1 1/2" hem on top.



Cutting out your tote:

Cut out your fabric. It does not matter whether you cut on the grain of the fabric, or cross wise; this is why floral totes are a good scrap-busting project!

Sewing:

1-Press the top edge (widest part) of your triangle over 1/2", then turn again and press another 1" to form a 1" wide hem with a finished edge. You can stitch this down with a straight stitch, or this is the perfect time to try some of those decorative stitches on your machine! A small amount of fabric will extend beyond the edge of your triangle, but that's ok. It will get trimmed off.



2-Fold the triangle with the wrong sides together, matching the diagonal sides. Serge a narrow seam, or sew a scant 1/4" seam. If you sew the 1/4" seam, then trim to 3/16" Your serger will trim off those ends of the hem, or you can trim them off when you trim the seam to 3/16"



4-Now turn your cone inside out, and press that seam. You're not pressing it open, you are pressing the fabric around the seam, flat.

5-Sew another seam, 1/4" wide, that encases the first seam. Now you've sewn a French Seam!



6-Now sew across the narrow bottom of your cone. This is not a French Seam, but it will be hidden in the end, so don't worry. Trim the corners.



7-Turn the cone right side out. You may need a pointed tool to poke the corners out nicely. Fold the bottom of the cone up 2" and align the seam side. stitch about 6-8 stitches along the edge to tack the bottom in place.



8-Cut a strip of fabric 48"x2". Fold and press the ends in 1/2" at each end. Fold and press it like bias tape using a bias tape tool, or your fingers. Then press it in half again, to form a 1/2" wide string. Topstitch along the long edge.

9-Fold that strip in half and then measure 2" down from the fold. Mark this point. This is where you will sew it to the floral tote.



10-Measure down 5" along the seam edge of your tote. make a mark here. This is where you will attach the ties. Pin the ties to that mark, matching that mark with the mark 2" from the fold of the ties. Then sew the ties on by stitching back and forth over both layers of the ties at the mark.



Now you have a floral tote!